



College Resource Center Graduate Scholarship Program School Year 2022-2023

Apply online at <https://scholarships.cherokee.org>

The Cherokee Nation College Resource Center provides scholarships and services for full-time and part-time graduate college students. Students must be a Cherokee Nation citizen, verified by the Registration Department. The scholarships are intended to supplement educational needs for those pursuing a degree from an accredited U.S. post-secondary institution determined by the Directory of Higher Education. The following scholarship opportunity is available:

Graduate Scholarship

Scholarship program for Cherokee Nation citizens seeking their first Masters or Doctorate degree at an accredited College/University, residing within the Cherokee Nation Reservation area or contiguous counties. Proprietary institutions are not eligible. The contiguous area (blue area on map) is more clearly defined as those counties located in the following states:

Oklahoma:

LeFlore, Haskell, Pittsburg, McIntosh, Muskogee, Wagoner, Tulsa and Osage Counties.

Arkansas:

Benton, Crawford, Sebastian and Washington Counties.

Kansas:

Chautauqua, Cherokee, Labette and Montgomery Counties.

Missouri:

McDonald County.

The scholarship funds up to \$2,000.00 per semester, depending on full-time or part-time status. Recipients cumulative GPA must remain in good standing with the college/university and fulfill community service requirements. Students must also complete and pass a minimum number of credit hours per semester in order to remain eligible for the scholarship. Online classes are eligible.

Application period: March 1 – June 15 (Academic Year 2022/2023)

Application Website: <https://scholarships.cherokee.org>

Students must follow guidelines each semester. No late applications will be accepted. Applicants must prepare the following documents as PDF files to upload to the online scholarship application:

NEW STUDENTS

- Letter of acceptance to graduate school
- Most recent college transcript - (can be unofficial)

CONTINUING STUDENTS (Students funded Spring 2022 on the CN Graduate Scholarship Program)

- College Transcript – Spring 2022 grades need to be posted
- Spring 2022 Self Help Form

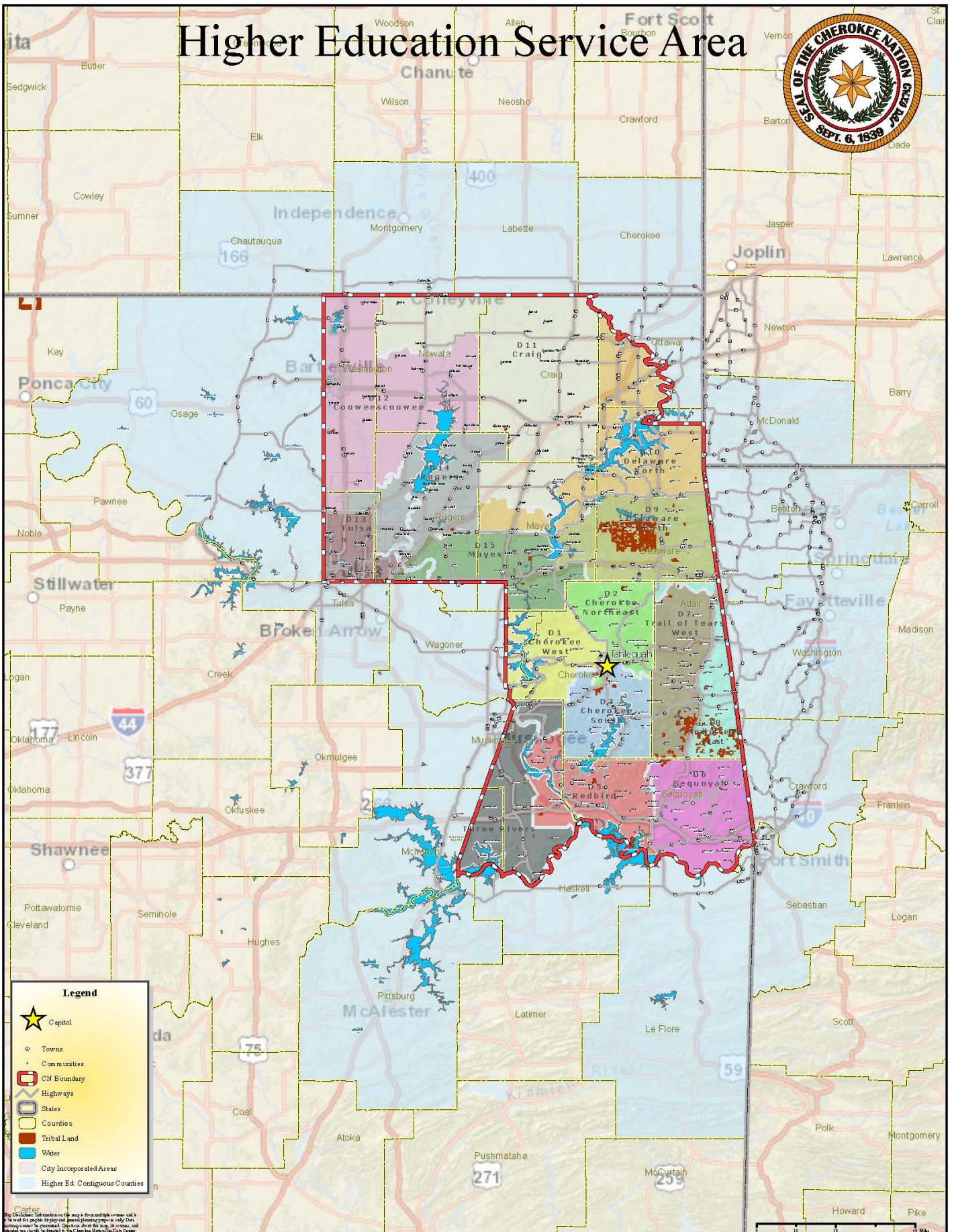
Feel free to email or call your advisor (assigned by last name unless noted).

A-D	Shayna Macias	shayna-macias@cherokee.org	918-453-5000 x7054
E-K	Kakiley Workman	kakiley-workman@cherokee.org	918-453-5000 x5308
L-R	Kaitlin Napier	kaitlin-napier@cherokee.org	918-453-5000 x7386
S-Z	Blaise Glory	blaise-glory@cherokee.org	918-453-5000 x7465

For more information, call (800) 256-0671 ext. 5465, email collegeresources@cherokee.org or visit www.cherokee.org/Service/Education/College-Resources

*Residency restrictions may apply. Community service hours will apply.
All scholarships are subject to the availability of funding.*

Higher Education Service Area



Legend

- Capitol
- Towns
- Communities
- CN Boundary
- Highways
- States
- Counties
- Tribal Land
- Water
- City Incorporated Areas
- Higher Ed. Contiguous Counties

Map created by the Cherokee Nation using data from the Oklahoma Department of Transportation and the Oklahoma Department of Transportation. All rights reserved. This map is for informational purposes only. Data accuracy cannot be guaranteed. Cherokee Nation does not warrant, represent, or make any claim, in any way, to the accuracy or completeness of the data.